

Revit Architecture 2010

Installation from Network Deployment Guide

The follow guide is Ideate's recommended method of creating a network deployment for Revit Architecture 2010. The procedures given are an overview of the creation of a network deployment of Revit Architecture 2010 to be run in non-silent mode. For more information on how to "Create Deployments", please refer to the Autodesk Revit Architecture 2010 Help documentation and search for topics - "Network Deployment Installation".

The images in this guide were captured from the Create Deployments routine from the Revit Architecture 2010 Installation DVD. This general process is similar to all vertical products and can be extrapolated for use with Autodesk Revit 2010 based products. (MEP, Structure).

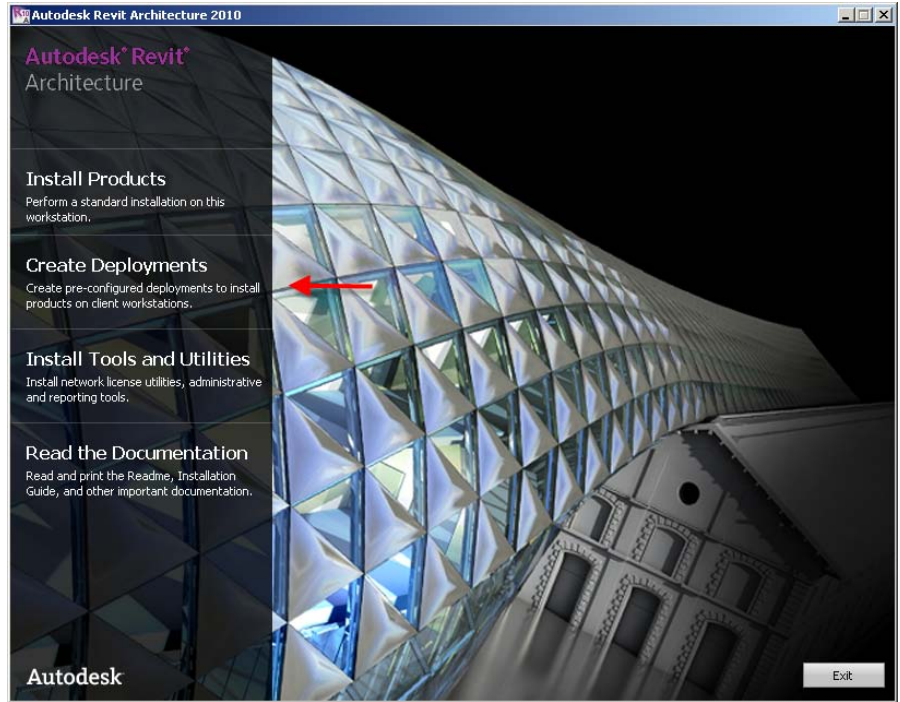
The theme of this document: **Keep It Simple**

Steps needed before you get started

1. Turn off virus protection on client and server if possible
 - a. This can make a difference of a couple of hours
2. Create a shared folder called Deployments on server
3. Share new folder as Deployments with full access
4. Create a folder called Revit Arch 2010
5. Create a folder called Revit Arch 2010 Media Image
6. Copy the contents of the Revit Architecture 2010 DVD to the Revit Arch 2010 Media folder
7. Run SETUP.EXE from the Revit Arch 2010 Media folder
 - a. Depending on the speed of your network you may want to create the deployment from the server.

If you do create it from the server, run everything from the shared directory: \\server\Deployments\Revit Arch 2010 Media

Select: **Create Deployments**



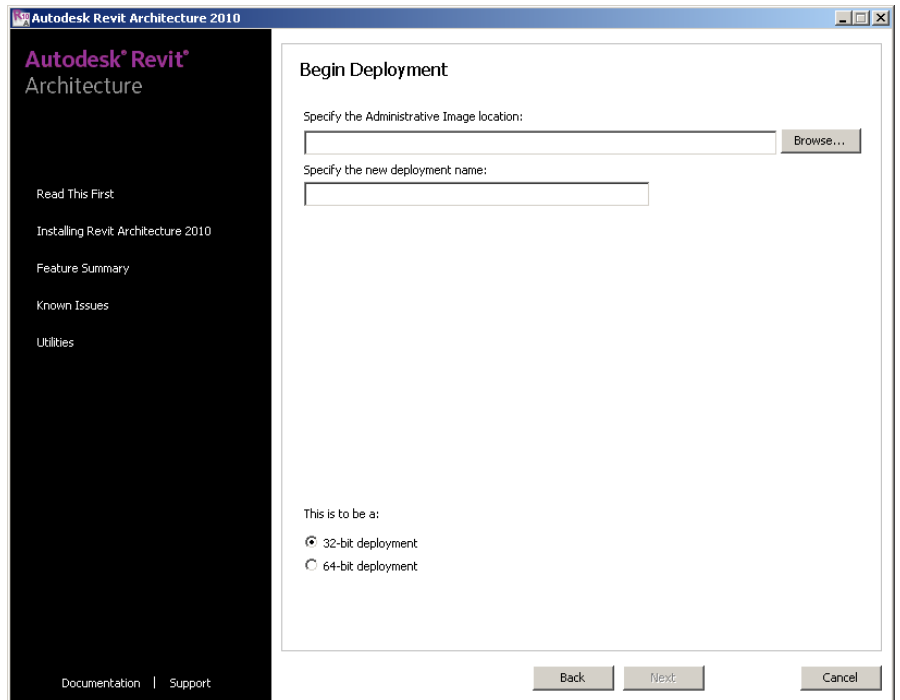
Begin Deployment:

You will be prompted to browse to a folder to place the deployment in.

Specify the Administration Image Location: Browse to the \\Server\Deployments\Revit Arch 2010 Folder that you created earlier.

If you want you can also create the deployment locally by specifying a folder on the local drive and moving this to a shared location after the deployment is made you can manually type this location into the **Admin. Image Path**.

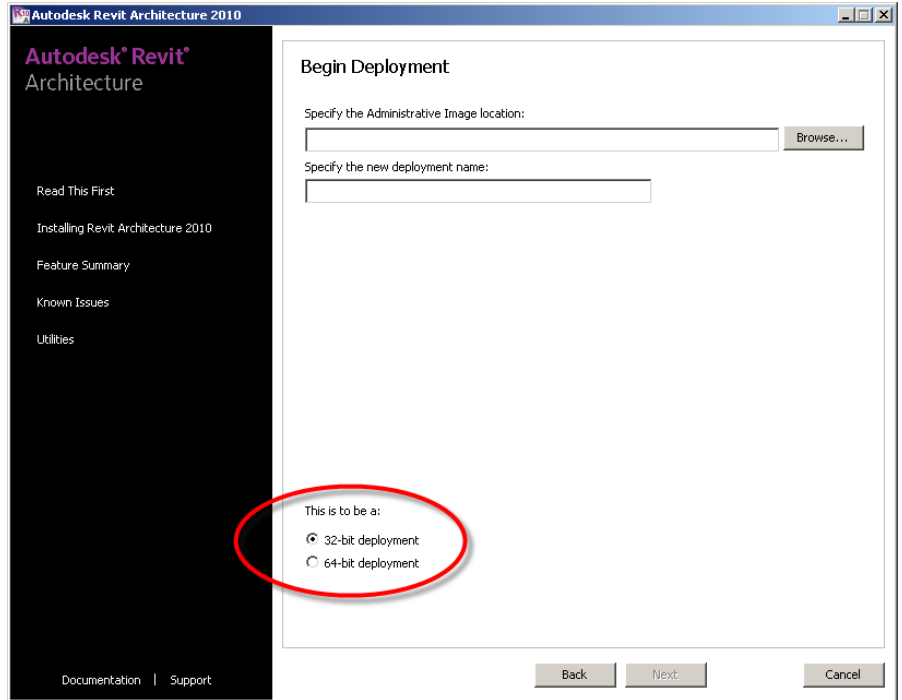
Deployment Name: Revit Architecture 2010 Deployment



32 vs 64 bit:

32 bit deployments may only be used on a 32 bit machine. If you have users who are using 64 bit Operating Systems, you will need to create two separate deployment images and differentiate between the two.

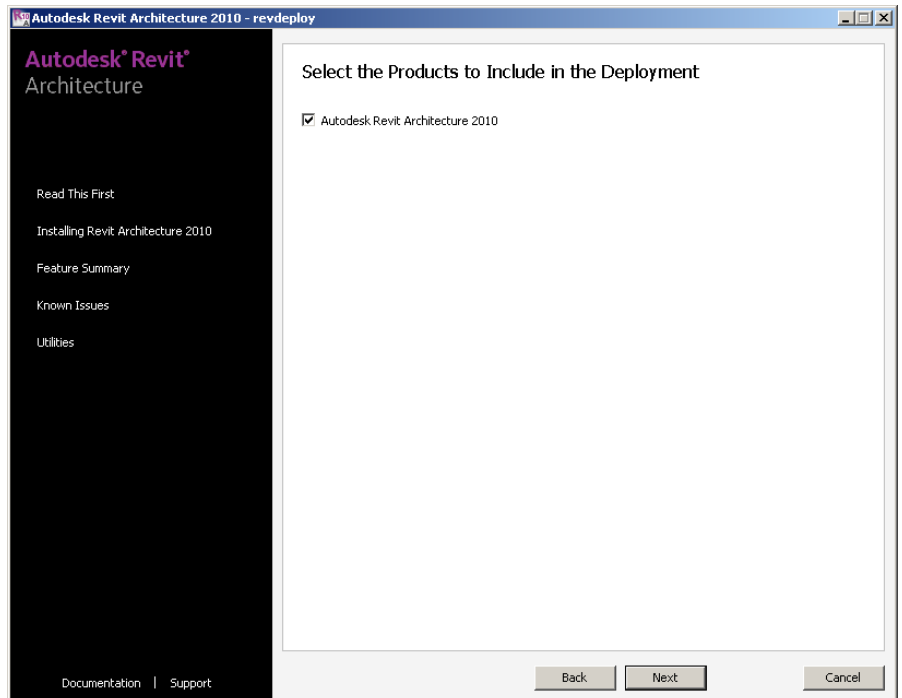
Choose Next



Select the Products to Include:

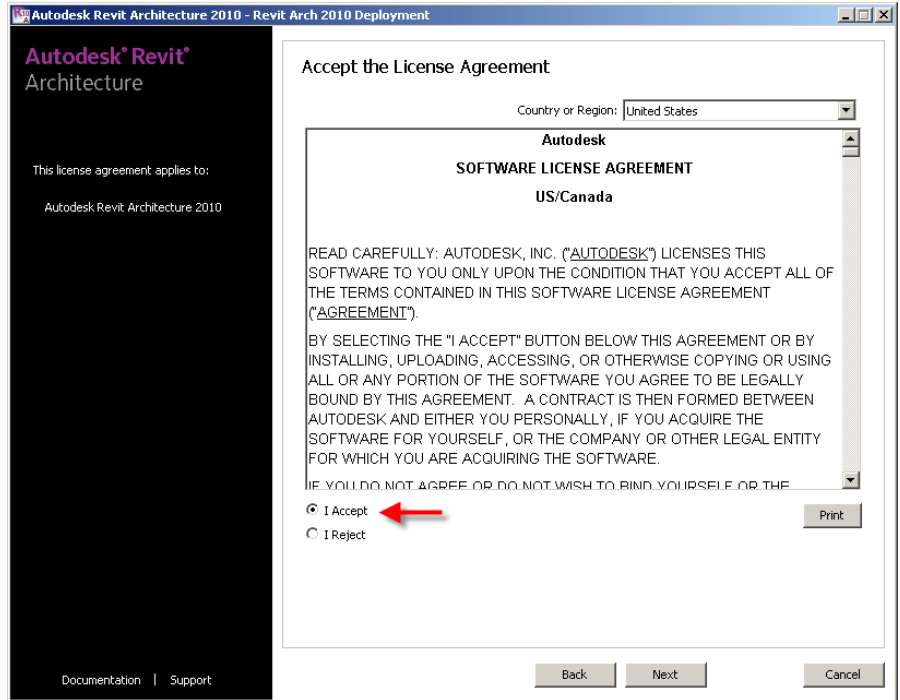
Ensure you have selected **Autodesk Revit Architecture 2010**.

Choose Next



Accept the License Agreement:
Accept the EULA to continue into the Configuration.

Choose Next



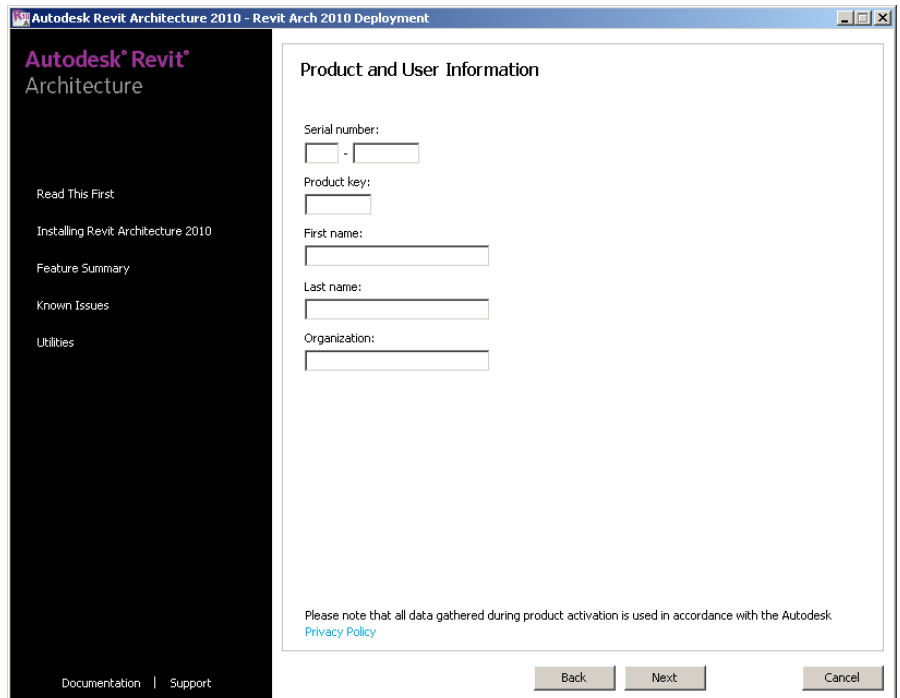
Product and User Information

Enter your **Serial Number** and **Product Key**. This is found on the back of the Product Case.

Also enter your **Name** and **Organization**.

This information is not sent to Autodesk

Note: You can also use serial number of 999-99999999 if you plan on using this image for stand-alone installations. The Product Key will remain the same as on the package. When you activate the installation you will be prompted to enter the serial number when launching the applications. Simply use the serial number assigned to that user/computer.

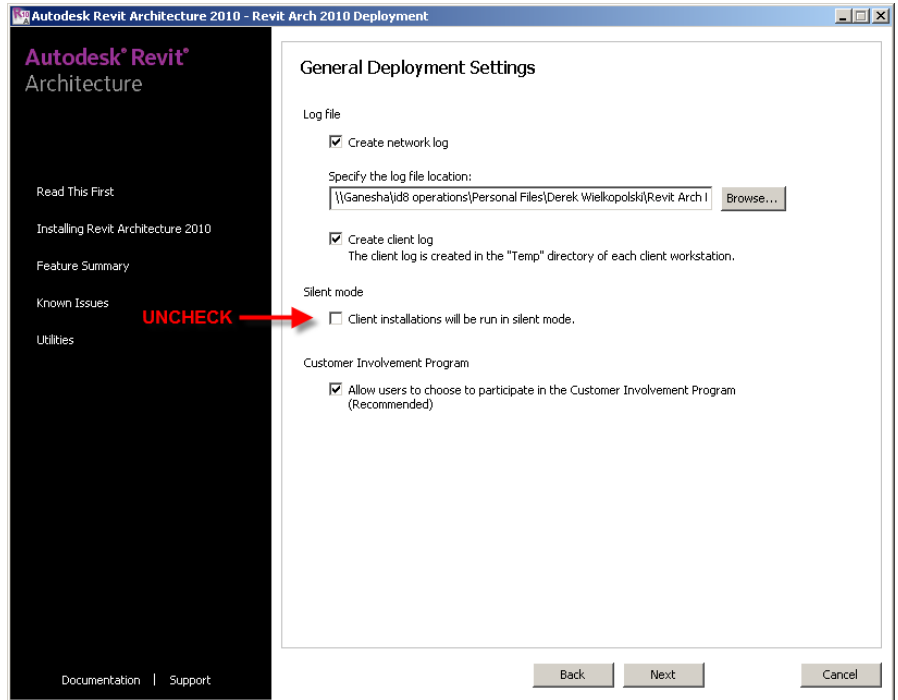


General Deployment Settings:

Ideate recommends that you check **Create client logs**. This way, you can keep track of who is using the deployment and which computers it has been installed on. Also, if there is an installation error, you can check the log file for clues to the cause of the issue..

In the same vein, we like to recommend un-checking **“Silent Mode”** as this will inform the user of any errors during the installation process.

Choose Next

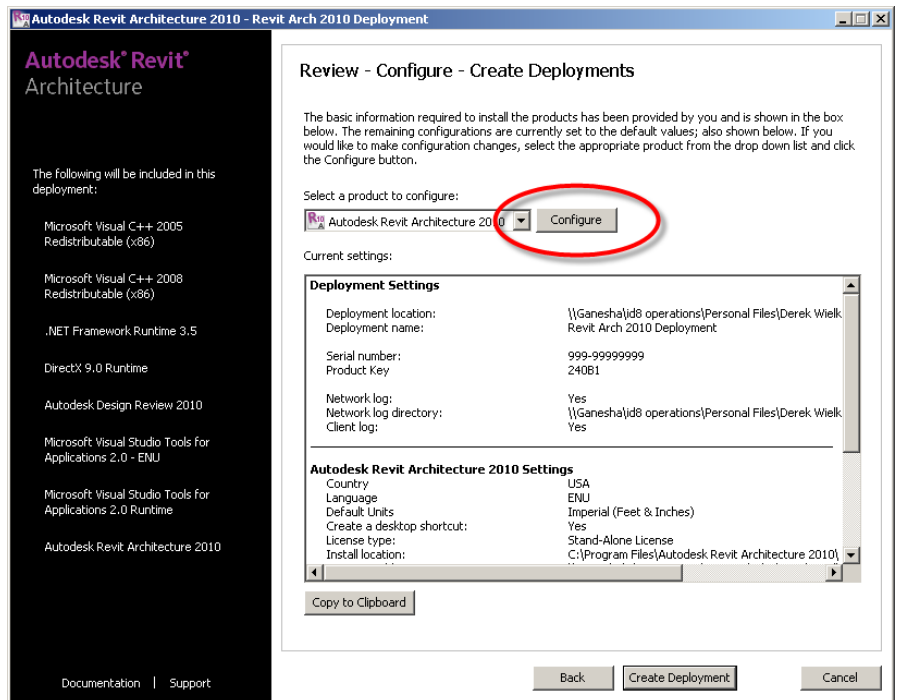


Review:

By default the installation is configured as a Standalone installation. If you are creating the deployment for a large number of network users you will need to configure the deployment as such.

To do so, you simply choose the **Configure** radio button

Again You **MUST** select configure in order to tell it to install as a **NETWORK** deployment.



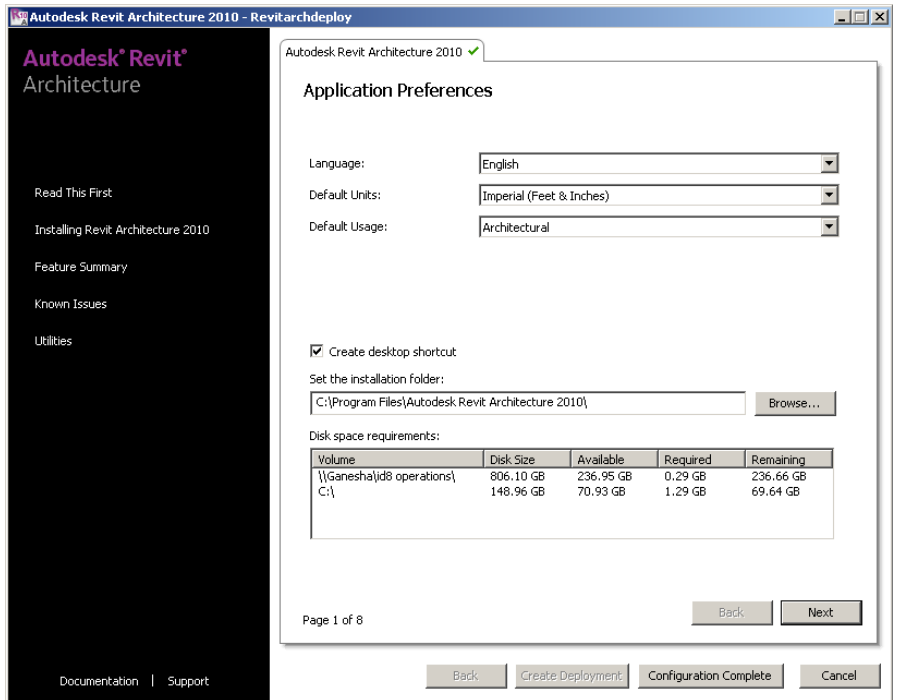
Application Preferences:

Verify the correct product Language, Default Units, and Default Usage

Product install path is where the install will be placed on the users system. Leave this unchanged.

Verify the disk space availability

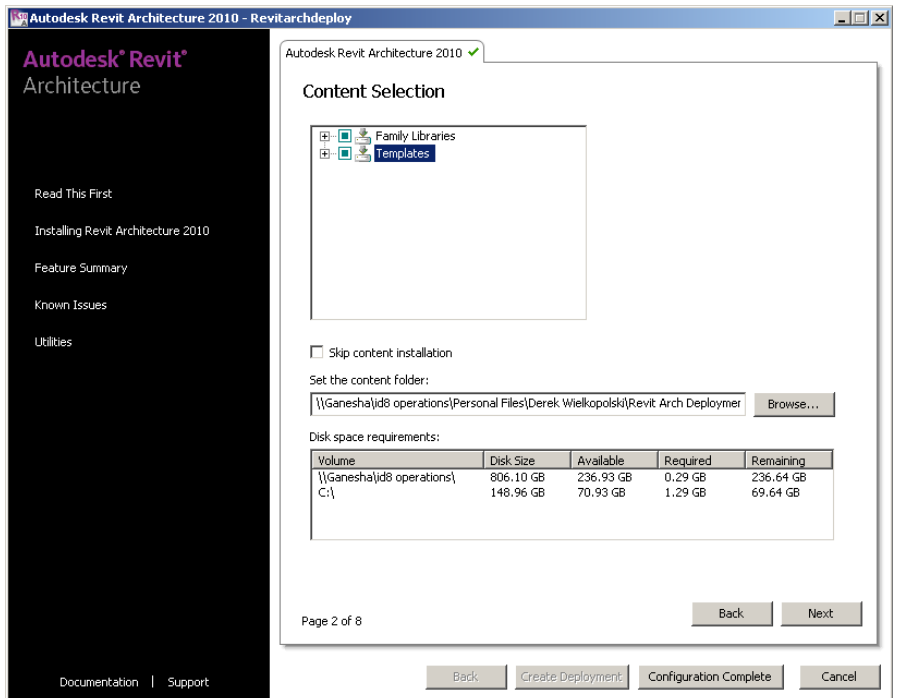
Choose Next



Content Selection:

Ideate recommends the default Family Libraries and Templates selections

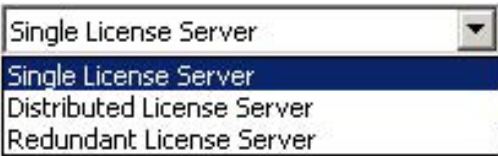
Choose Next



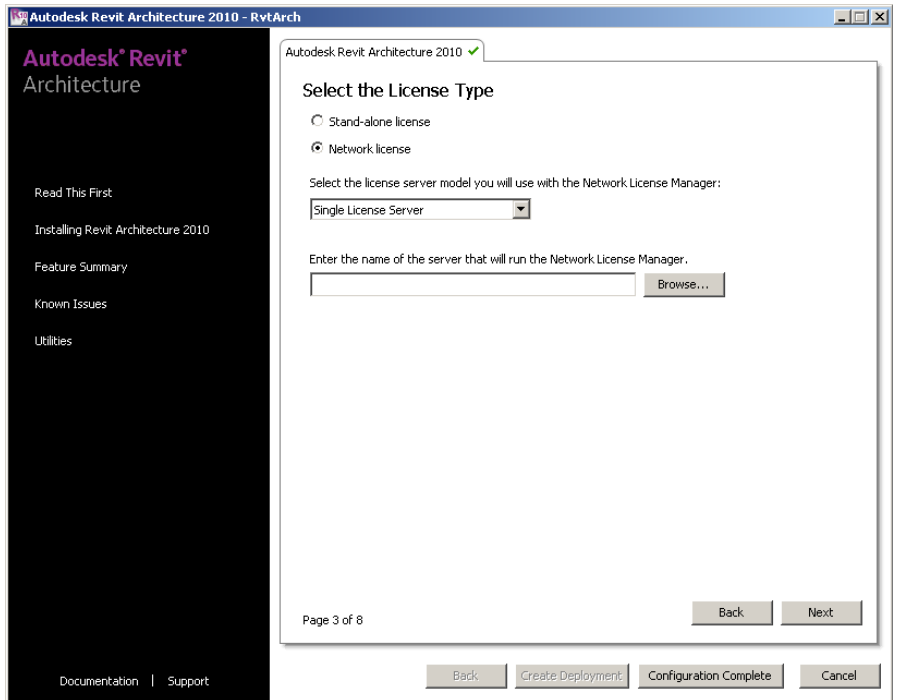
Select the License Type:

Once in the configuration dialogue, switch the version to **Network License**, Installations from a stand-alone deployment will never try and check out a license from a license server. It will ask you to authorize the software instead of checking out a license.

Set the Server License Model to **Single License**



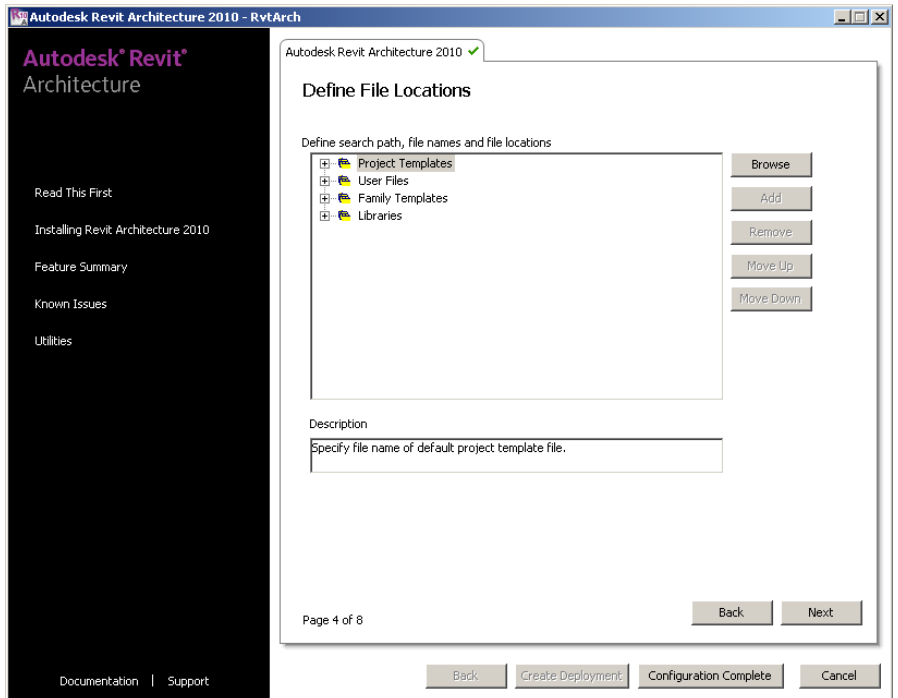
Choose Next



Define File locations:

Only modify file locations if necessary

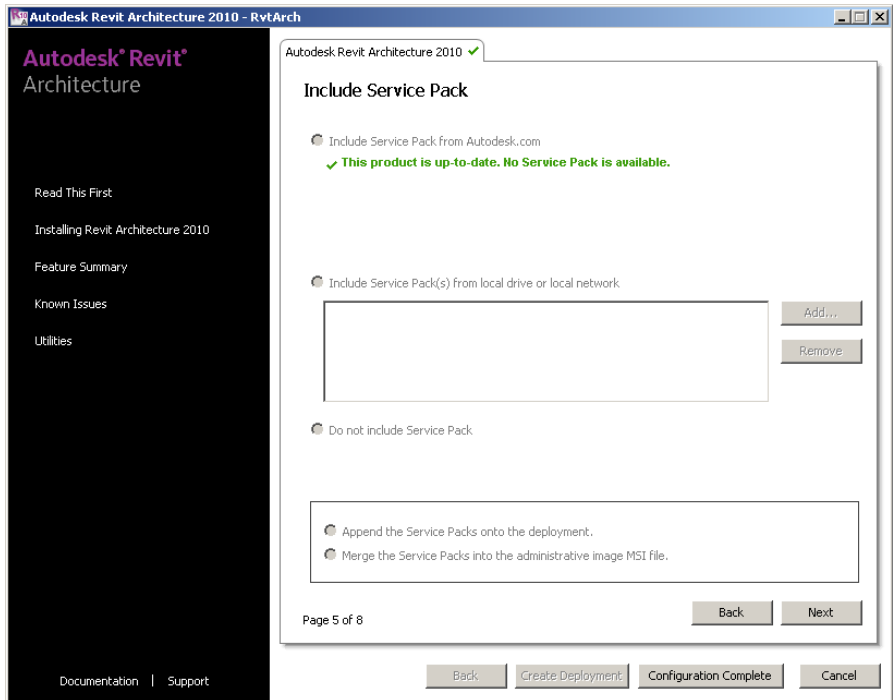
Choose Next



Include Service Pack:

We highly recommend that you do not apply the service pack to a deployment. This will increase your chance of corrupting the image, and create further headaches if done incorrectly. Service Packs can be applied to each workstation individually after the installation is complete. For information on appending a SP to a deployment, please see the READ ME file associated with the Service Pack executable.

Choose Next

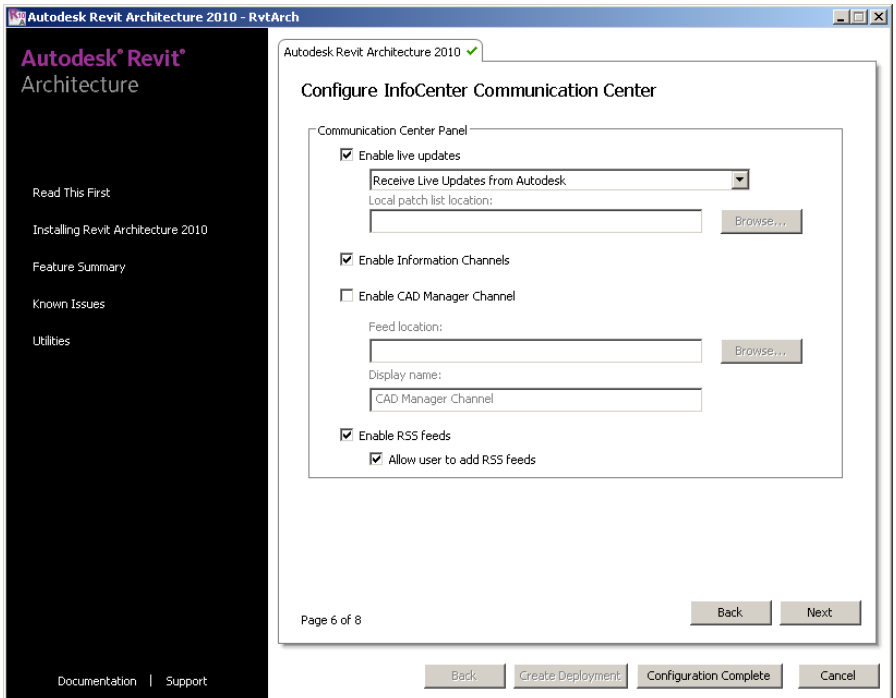


Configure InfoCenter Communication Center:

Adjustments to this page are up to you. If you do not want your users to modify their installs or get information directly from Autodesk, then you can uncheck the **Enable Live Updates**, **Enable Information Channels**, and **Enable RSS Feeds**.

The **CAD Manager Channel** is a highly technical application which needs to be set up before the deployment is made. It is more difficult to use than it sounds. Ideate does not recommend using this tool.

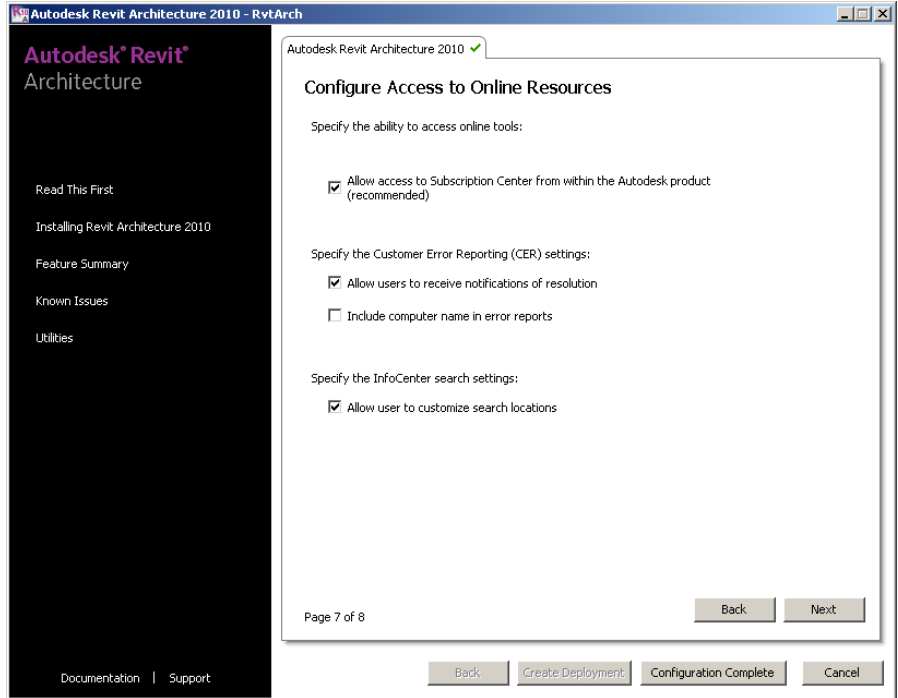
Choose Next



Configure Access to Online Resources:

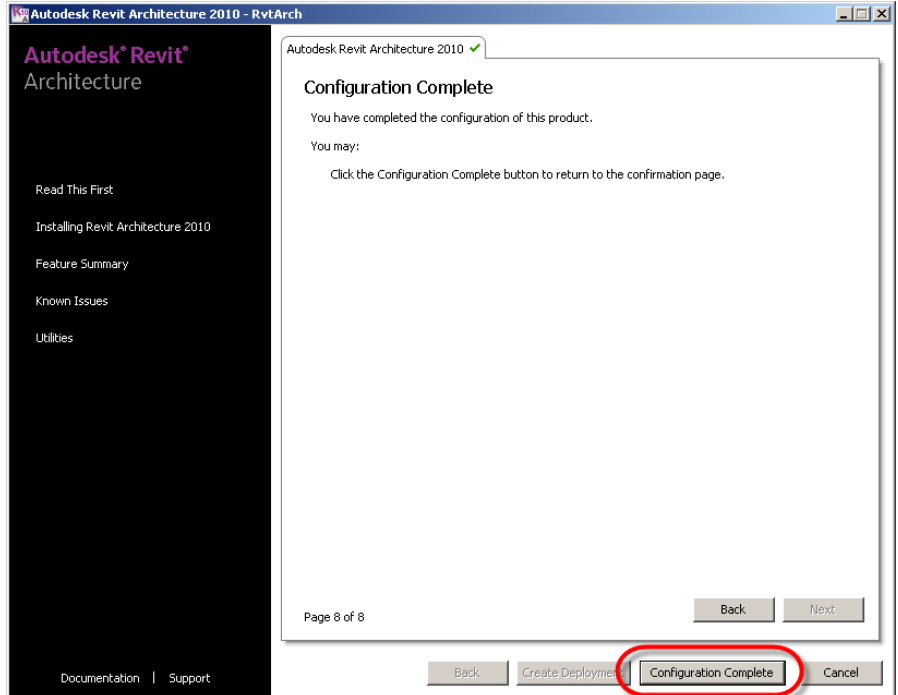
Like the previous page, unless you have a compelling reason to limit your users online functionality we would suggest that you check all available option on this page

Choose Next



Configuration Complete:

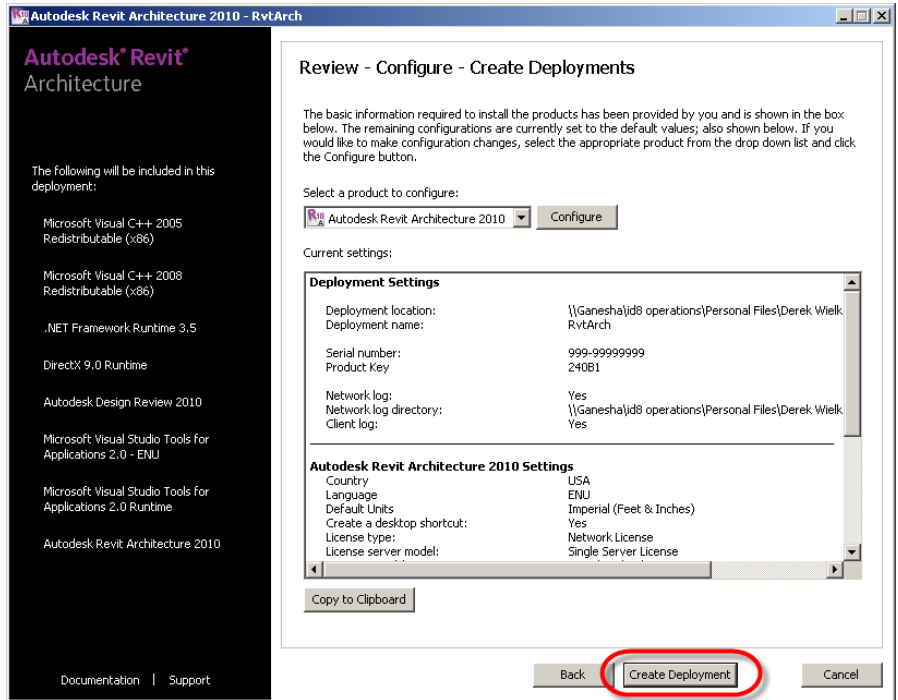
You have completed configuring Revit and can now select the **Configuration Complete** radio button



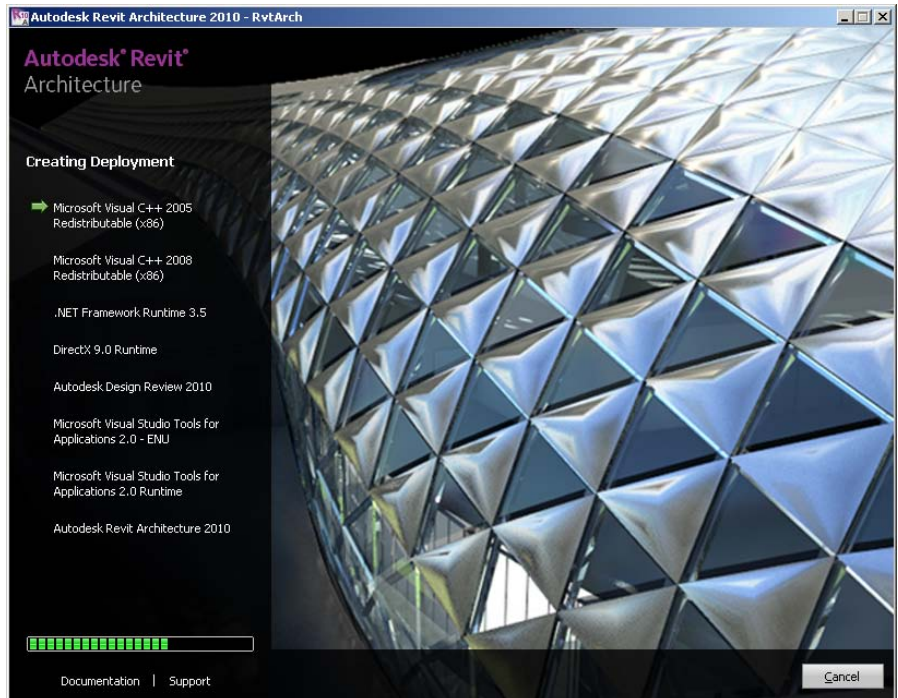
Review:

You can review the settings of the deployment here. For reference you may want to print or save this report.

Once you are satisfied that your settings are correct select **Create Deployment**.

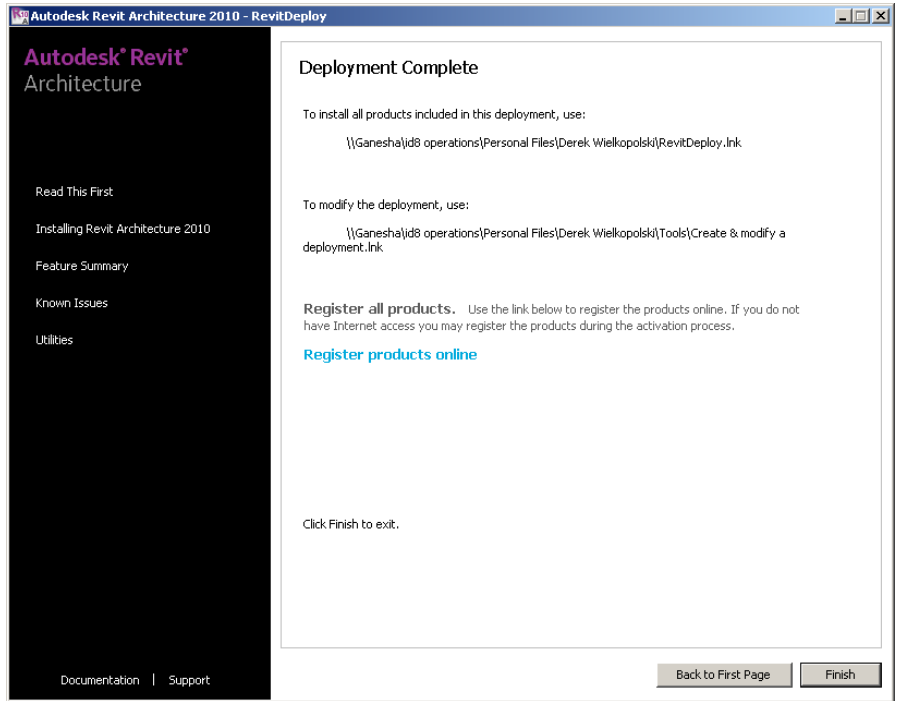


Autocad will now run through the creating process which could take anywhere 5 minutes to an hour depending upon your network connection speed



Deployment Complete:

If the deployment is created with no errors you should see a similar message. Users can now begin installing from this image to their workstations.



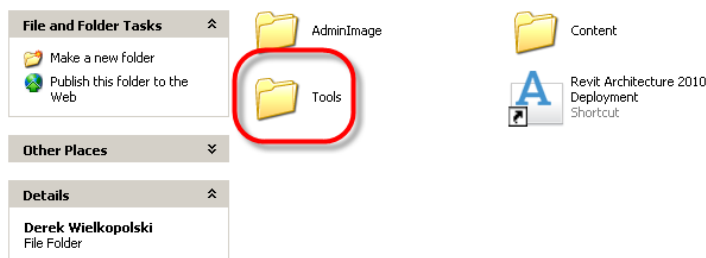
Select **Finish**

If this deployment is set up as a network version, you will need to install and configure the Network License Manager. This can be found on the Revit Architecture 2010 Media under Tools and Utilities in the setup screen.

If you have any questions about this process please email Ideate Support at support@ideateinc.com.

Ideate does provide in house consulting services for custom product setup and installation. Additionally we offer training and support for a variety of Autodesk Software. For more information please contact your Account Representative or our Training Department.

To modify this deployment you can go to the **Tools** folder and select the **Create & Modify the Deployment** icon and it will re-launch the setup screen and allow you to make changes.



When the user navigates to the Server Location which you have specified they will simply launch the **Revit Architecture** icon and the installation will begin.

