

Autodesk® Revit® Architecture 2012

Autodesk Certification Exam Preparation Roadmap

Autodesk certifications are industry-recognized credentials that can help you succeed in your design career—providing benefits to both you and your employer.

The certifications provide reliable validation of skills and knowledge, and they can lead to accelerated professional development, improved productivity, and enhanced credibility.

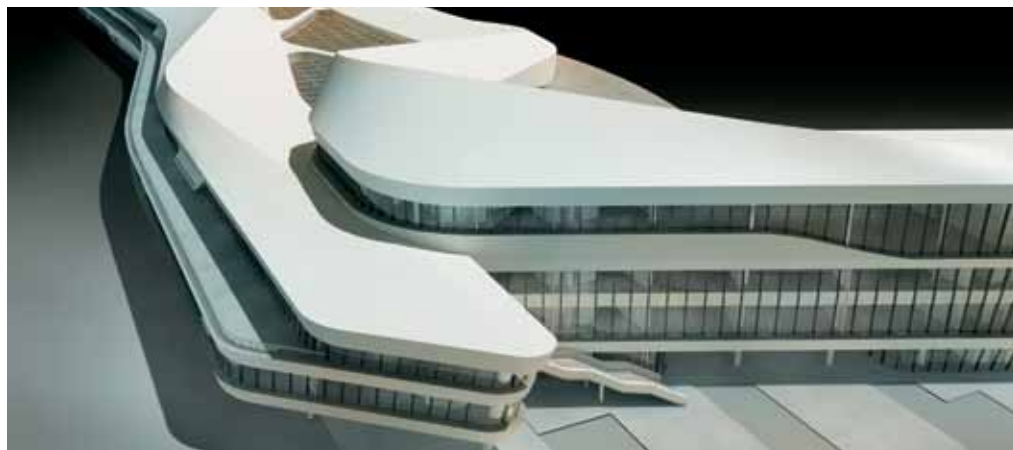


Image courtesy of CCDI Group

Autodesk highly recommends that you structure your examination preparation for success. This means scheduling regular time to prepare, reviewing this exam preparation roadmap, using the Autodesk Official Training Guide, taking an Assessment test, and using a variety of resources. Equally as important, actual hands-on experience is recommended.

The Autodesk Revit Architecture 2012 Certified Associate exam consists of 30 questions that assess your knowledge of the tools, features, and common tasks of Autodesk Revit Architecture 2012. Question types include multiple choice, matching, and point-and-click (hotspot). The exam has a 1-hour time limit. (In some countries, the time limit may be extended.)

The Autodesk Revit Architecture 2012 Certified Professional exam is a performance-based test. The exam is comprised of 20 questions. Each question requires you to use Autodesk Revit Architecture 2012 to create or modify a data file, and then type your answer into an input box. The answer you enter will either be a text entry or a numeric value. The exam has a 90-minute time limit. (In some countries, the time limit may be extended.)

To earn the credential of Autodesk Revit Architecture 2012 Certified Professional, you must also pass the Autodesk Revit Architecture 2012 Certified Associate exam. You can pass the exams in any order.

To recertify from Autodesk Revit Architecture 2011 Professional to Autodesk Revit Architecture 2012 Professional, you need only pass the Autodesk Revit Architecture 2012 Certified Associate exam.

Assessment Tests

Autodesk assessment tests will help identify areas of knowledge that you should develop in order to prepare for the certification exam. At the completion, you will be able to review the items you missed and their correct answers. Contact an Autodesk Certification Center for more information at <http://autodesk.starttest.com>.

Autodesk Official Training Guides

The Autodesk Official Training Guide for the Autodesk Revit Architecture 2012 Certification exams is *Autodesk Revit Architecture 2012 Essentials* from Wiley Publishing. This guide is available from booksellers and online booksellers worldwide.

ATC® Instructor-Led Courses

The Autodesk Authorized Training Center (ATC®) program is a global network of professional training providers offering a broad range of learning resources. Visit the online ATC locator at <http://www.autodesk.com/atc>.

Recommended Experience Levels for Autodesk Revit Architecture Certification Exams

Actual hands-on experience is a critical component in preparing for the exam. You must spend time using the product and applying the skills you have learned.

- **2012 Certified Associate exam:** Autodesk Revit Architecture 2012 course (or equivalent) plus 100 hours of hands-on application
- **2012 Certified Professional exam:** Autodesk Revit Architecture 2012 course (or equivalent) plus 400 hours of hands-on application

Autodesk Revit Architecture 2012

Exam topics and objectives

We recommend that you review the topics and objectives during your preparation for certification. The Autodesk Official Training Guide for the Autodesk Revit Architecture 2012 Certification exams is *Autodesk Revit Architecture 2012 Essentials* from Wiley Publishing. That guide—which covers the topics and objectives listed below—is available from booksellers and online booksellers worldwide. Please note that not all objectives will be tested during your certification exam.

Autodesk Revit Architecture 2012 Certified Associate

Topic	Objective
Collaboration	Use worksharing Import DWG files into Revit
Documentation	Create and modify filled regions Place detail components and repeating details Use dimension strings Set the colors used in a color scheme legend
Elements	Create a stacked wall Differentiate system and component families Modify an element's type parameters Use Revit family templates
Modeling	Create a building pad Define floors for a mass Create a stair with a landing Generate a toposurface Model railings Edit a model element's material (door, window, furniture) Change a generic floor/ceiling/roof to a specific type Attach walls to a roof or ceiling
Views	Define element properties in a schedule Control visibility Use levels Create and manage legends Manage view position on sheets Move the view title independently of the view Organize and sort items in a schedule

Autodesk Revit Architecture 2012 Certified Professional

Topic	Objective
Collaboration	Copy and monitor elements in a linked file Import DWG files into Revit
Documentation	Tag elements (doors, windows, etc.) by category
Elements	Change elements within a curtain wall (grids, panels, mullions) Create compound walls Create a stacked wall Create and modify family categories Create a new family type
Modeling	Assess review warnings in Revit Define floors for a mass Create a stair with a landing Create elements such as a floors, ceilings, or roofs Generate a toposurface Model railings Work with phases Attach walls to a roof or ceiling
Views	Control visibility Use levels Create a duplicate view for a plan, section, elevation, drafting view, etc. Create and manage legends



888.662.7238
ideateinc.com
sales@ideateinc.com

For more information
<http://www.autodesk.com/certification>
Find an Autodesk Certification Center
<http://autodesk.starttest.com>