

# enhanced productivity

('in·han(t)s·d 'prō·dək·ti·və·tē) noun

1. producing with increased or improved value, quality and desirability
2. yielding results, benefits, or profits in abundance

AEC professionals experience enhanced productivity with Building Information Modeling (BIM) as a core design methodology. Revit® Architecture is the basis for enhanced productivity with BIM.

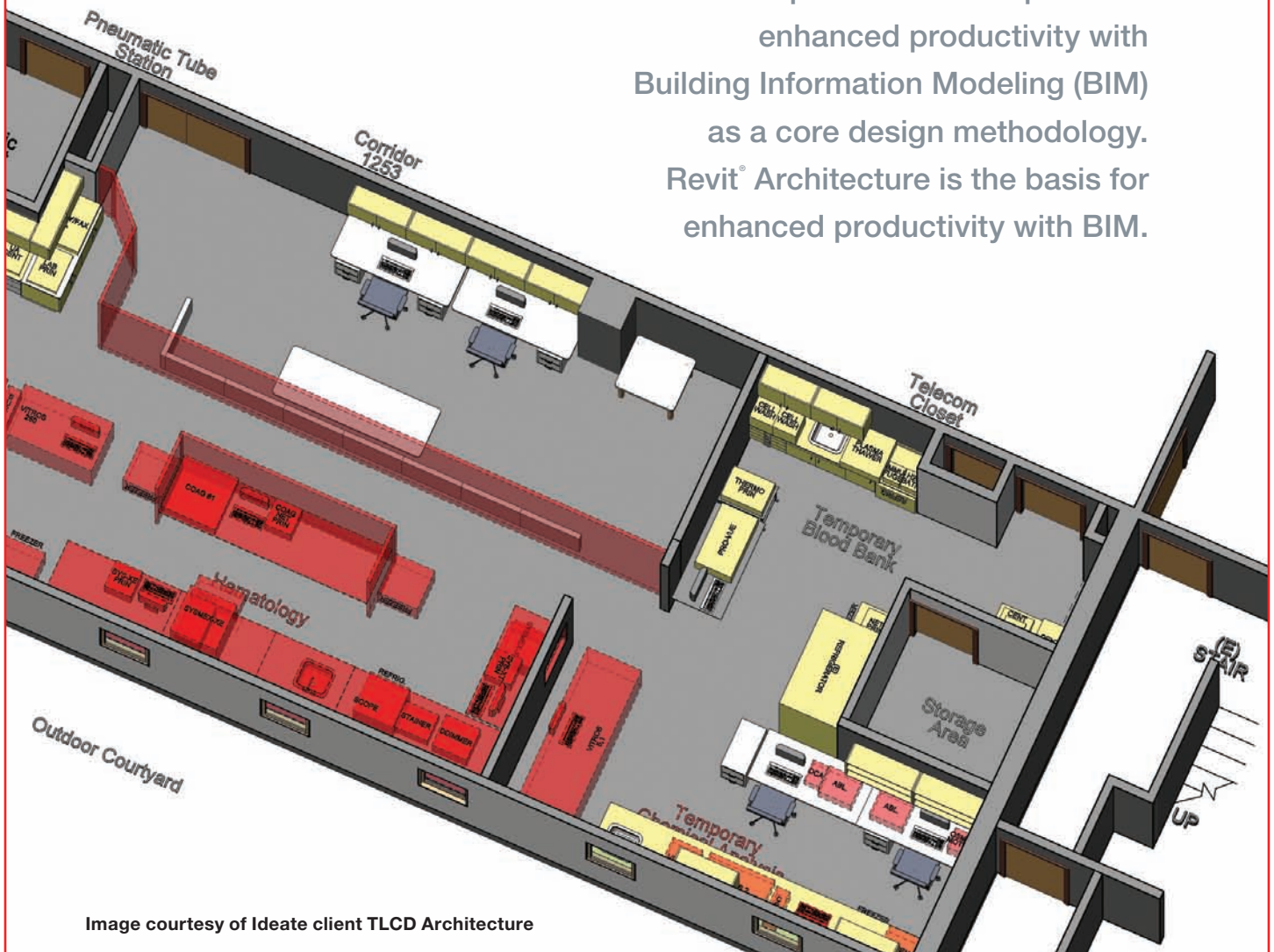


Image courtesy of Ideate client TLCD Architecture

San Francisco

San Jose

Sacramento

Portland

Seattle

Contact your Ideate Account Manager for a test drive today.

Already own Revit Architecture? Ideate offers a full range of classroom and online training courses to enhance your team's productivity.

**Autodesk**  
Authorized Value Added Reseller  
Authorized Developer  
Authorized Training Center  
Consulting Services Partner



# Compete and Succeed with Ideate Solutions

Ideate, Inc. is a leading Autodesk® solution source, providing innovative products, training, professional services and technical support for the Architecture, Engineering and Construction (AEC), civil, GIS and multimedia industries. Established in 1992, Ideate is recognized as an Autodesk® Premier Solutions Provider (PSP) – Building Architecture.

## PRODUCTS

Our industry focused software products are designed to help your business be more competitive and successful. With years of experience, the Ideate team will help you choose practical software solutions that are specific to your business needs.

## TRAINING

Ideate's five locations are Autodesk® Authorized Training Centers, as well as Autodesk® Authorized Certification Centers, providing globally recognized training and certification courses for professionals who use Autodesk products and solutions.

The Ideate training course roster features highly relevant, interactive and efficient training classes at Ideate training centers, at your location by arrangement and online. Very convenient eLearning through Ideate maintains your daily business operations uninterrupted.

## PROFESSIONAL SERVICES

Ideate is also an Autodesk® Authorized Consulting Services Partner, receiving specific methodologies, tools and training to enable you to maximize your return on investment and success with Autodesk technology.

## TECHNICAL SUPPORT

Receiving the correct answer in a timely manner from experts who know your business is what Ideate Support is all about. Our in-house technical support team lives, breathes and solves your day-to-day challenges and crises.

## TOOLS

With a specific focus on Building Information Modeling (BIM), Ideate is also developer of Ideate Explorer for Revit, the simple, powerful tool that helps Revit® users explore, quantify and manage the 10,000+ building elements in a Revit building information model. Ideate Explorer is a division of Ideate, Inc.

## Ideate Stands Committed to BIM and Committed to You

**As a core design methodology, Building Information Modeling (BIM) is distinguished by intelligent, three-dimensional, parametric object-based design such that a change anywhere in the BIM model is a change everywhere, automatically and instantly. BIM allows a single virtual model to be shared between all AEC contributors, with each discipline able to contribute information and track all changes. Throughout the building lifecycle – concept, construction to decommissioning – BIM minimizes information loss and delivers extensive, immediately applicable information about project scope, schedule and cost.**

**Ideate, Inc. is the industry leader in Autodesk Revit implementations for BIM.**

Ideate, Inc. solutions combine software and services specifically designed to help your business compete and succeed. To explore all Ideate brings you, visit [www.ideateinc.com](http://www.ideateinc.com).

San Francisco

San Jose

Sacramento

Portland

Seattle

**Contact your Ideate Account Manager to learn more:**

**888.662.7238**

**[sales@ideateinc.com](mailto:sales@ideateinc.com)**

**Autodesk**  
Authorized Value Added Reseller  
Authorized Developer  
Authorized Training Center  
Consulting Services Partner

