




SmartBIM

Building Information Modeling



Building Information Modeling (BIM)

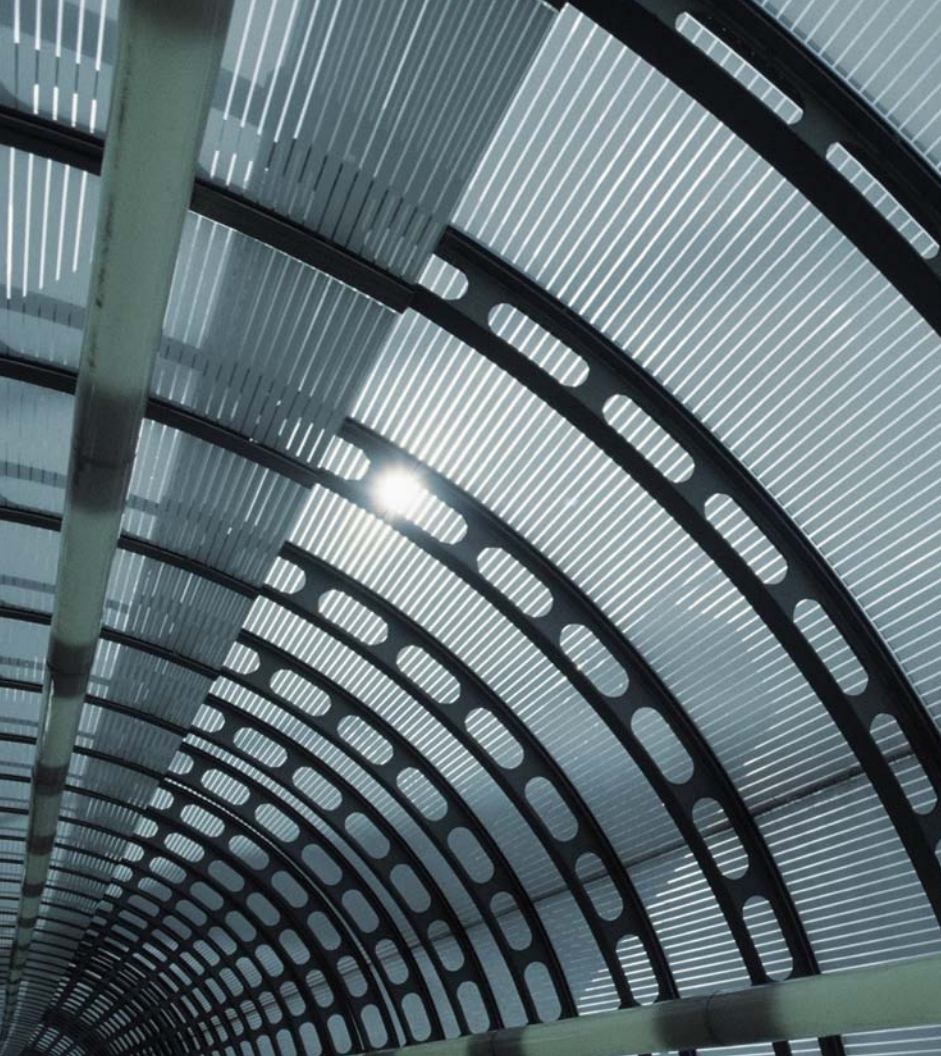
the way you want it managed...

BIM is becoming the foundation of building design, visualization studies, contract documents, analysis, simulation and facilities management. Autodesk® Revit® is the dominant BIM authoring application and Revit's market penetration into architectural firms is occurring three times faster than the market penetration of 2D CAD in the 1980s. In the next few years, the majority of all projects will be modeled in Revit.

High-quality, need-specific, and re-usable BIM content will be an enabling factor for successful BIM-based projects and the use of BIM downstream of design. However, developing and managing objects introduces new challenges for design firms because of the need to represent 3D geometry and encode other kinds of information. The cost and resources needed to develop objects can detract from designing and delivering buildings, which is the core focus of an architectural firm.

Reed Construction Data is working as a trusted partner to help architects, contractors and building product manufacturers manage this transition and maximize its potential through the SmartBIM products below:



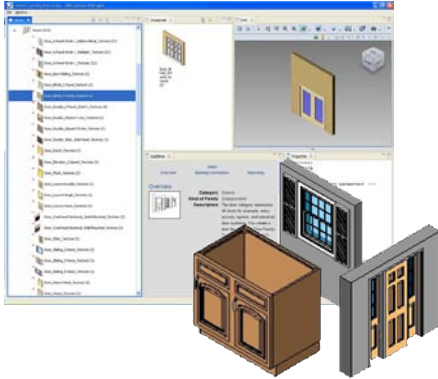


SmartBIM Library™ caters to firms using Autodesk Revit and addresses Revit content management problems encountered by design firms.

Currently, the Windows file system is the predominant tool for organizing and finding Revit families. SmartBIM Library (SBL) is a companion product to Revit, and can assist the user with organizing, managing and locating BIM content. It will also allow you to generate libraries from your Revit families.

Features

The Family Content Publisher feature provides an easy-to-use tool that organizes your BIM Objects in libraries. You can flexibly create a master office library and a library for each project and building type. After selecting a library, you can find Revit families in a hierarchy by category and type, through 3D visualization of thumbnails and DWF



views and by searching property sets. Upon selection, of thumbnails and DWF views and by searching property sets. Upon selection, you can drag-and-drop a family into your Revit project or save it to a directory folder.

BIM Content

SmartBIM Library ships with a library of Revit families developed by Reed Construction Data. These parametric family models are designed for re-use across projects, design representation and 'count ability' for quantity take-off. The "Reed" icon appears in the library thumbnail for each Revit family developed

by Reed Construction Data. You will have the option to receive regular updates and additions of generic and manufacturer specific content developed by Reed Construction Data. Additionally, content can be delivered on-demand by special agreement.

RSMeans® Quick Cost Estimator

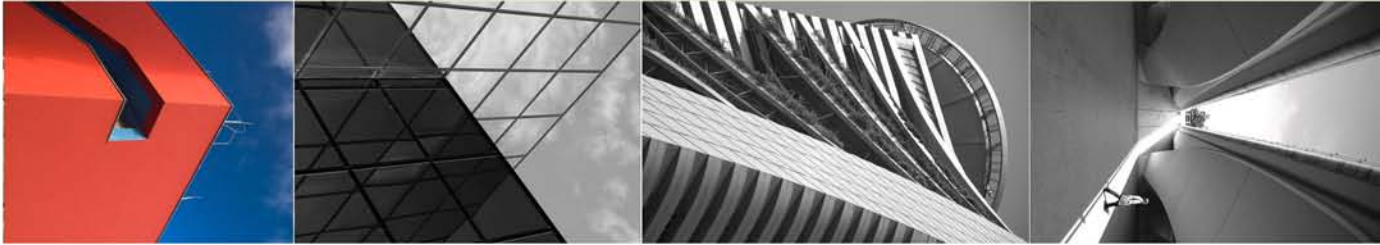
RSMeans Quick Cost Estimator (QCE) enables you to quickly calculate the estimated value of a project specified to your location. Select from more than 50 building types in 930 locations throughout the U.S. and Canada. The calculations include add-on costs itemizing low, medium & high estimates for Architectural Fees & Contractor's Overhead & Profit. A trial version of QCE is included with every installation of SmartBIM Library.



Creating high-quality SmartBIM Objects™ and distributing them to the design community will increase your chances to be specified and become the basis of design. With the integration of RSMeans data into the work flow of architects, engineers and contractors, Reed Construction Data is looking to take BIM to the next level. In using this data, you can instantly compile quantity takeoffs and create detailed estimates.

Interested in learning more about our future offerings of SmartBIM QTO and SmartBIM Data? Visit our online BIM Community at www.smartbim.com or call (877) REED-411.





**Reed Construction Data**[®]
30 Technology Parkway South
Norcross, GA 30092

AIA Strategic Partner

Reed Construction Data . 30 Technology Parkway South, Norcross, GA 30092 . Ph: (877) REED-411